

M 9

Backsplash System



M 8







Title Of Invention: A DEVICE FOR SPACED HANGERS
Patent No.: HK1230837
Application No.: 17105330.9

M9



Title Of Invention: A DEVICE FOR SPACED HANGERS
Patent No.: HK1230837
Application No.: 17105330.9

Concise lines

Flexible use of space

Precision manufacturing

Innovative design



Title Of Invention: A DEVICE FOR SPACED HANGERS
Patent No.: HK1230837
Application No.: 17105330.9



Title Of Invention: A DEVICE FOR SPACED HANGERS
Patent No.: HK1230837
Application No.: 17105330.9



Title Of Invention: A DEVICE FOR SPACED HANGERS
Patent No.: HK1230837
Application No.: 17105330.9

M9

Switch button with LED light

Easy to install

Precision manufacturing

Innovative design



Title Of Invention: A DEVICE FOR SPACED HANGERS
Patent No.: HK1230837
Application No.: 17105330.9



Title Of Invention: A DEVICE FOR SPACED HANGERS
Patent No.: HK1230837
Application No.: 17105330.9

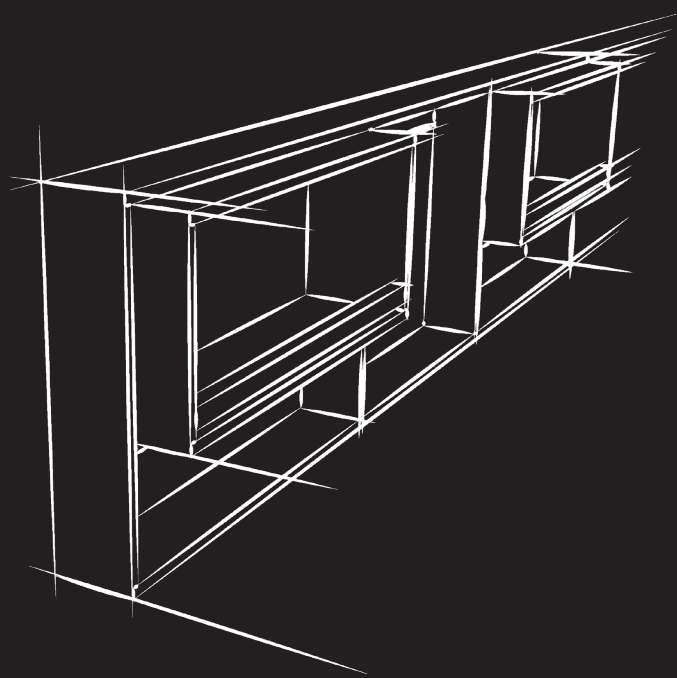


Title Of Invention: A DEVICE FOR SPACED HANGERS
Patent No.: HK1230837
Application No.: 17105330.9

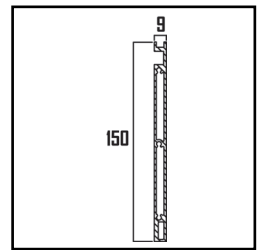
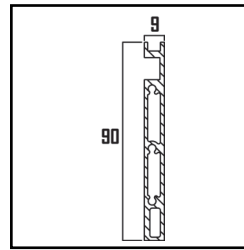
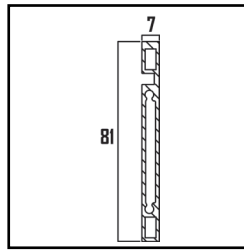


Title Of Invention: A DEVICE FOR SPACED HANGERS
Patent No.: HK1230837
Application No.: 17105330.9

Title Of Invention: A DEVICE FOR SPACED HANGERS
Patent No.: HK1230837
Application No.: 17105330.9



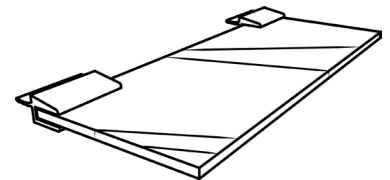
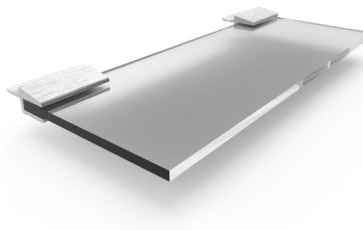
M9



Glass Shelf

Model: M9001

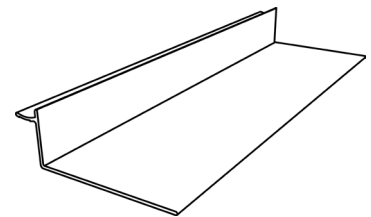
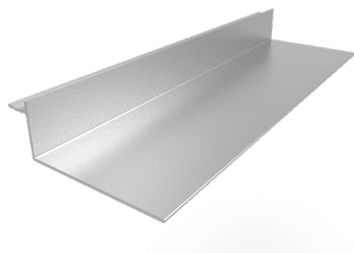
Size: W D H
 300 x 120 x 6
 350 x 120 x 6
 400 x 120 x 6



Aluminum L Shape Holder

Model: M9002

Size: W D H
 250 x 98 x 81
 300 x 98 x 81
 350 x 98 x 81



Silver

Hairline Black

Charcoal Black

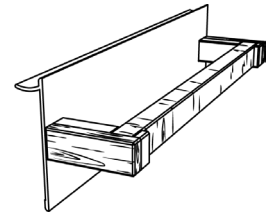
Warm Silver

Champagne

Paper Towel Holder (A)

Model: M9003

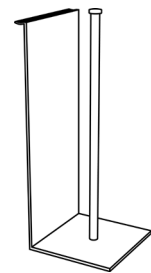
W D H
Size: 266 x 120 x 80



Paper Towel Holder (B)

Model: M9004

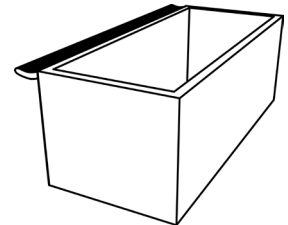
W D H
Size: 100 x 115 x 225



Storage Holder

Model: M9005

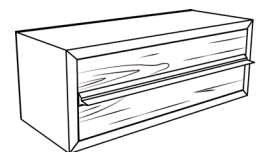
W D H
Size: 230 x 85 x 80
300 x 85 x 80



Storage Drawer (A)

Model: M9006

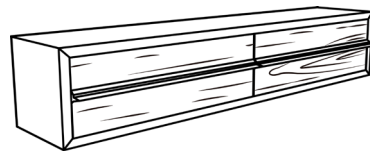
W D H
Size: 230 x 84 x 85



Storage Drawer (B)

Model: M9007

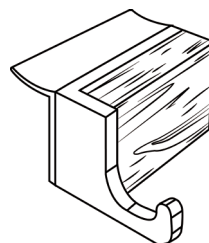
W D H
Size: 444 x 84 x 85



Mini Hook

Model: M9008

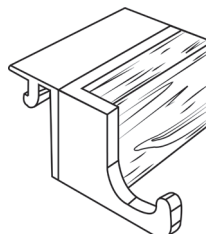
W D H
Size: 30 x 45 x 22



Mini Hook

Model: M9009

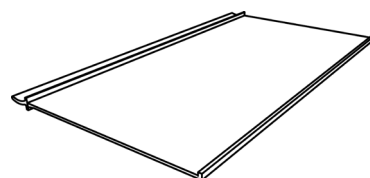
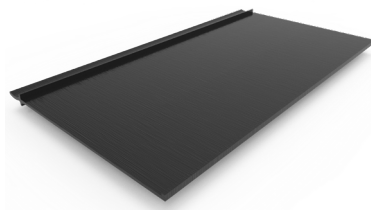
W D H
Size: 30 x 42 x 22



Aluminum Shelf

Model: M9010

W D H
Size: 300 x 150 x 5
450 x 150 x 5
600 x 150 x 5



Silver

Hairline Black

Charcoal Black

Warm Silver

Champagne

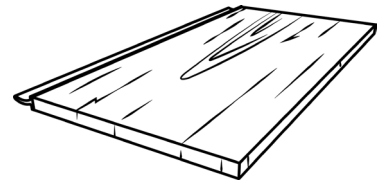
Dark Oak

Walnut

Wood Shelf

Model: M9011

Size: $\begin{matrix} W & D & H \\ 450 & 300 & 25 \\ 600 & 300 & 25 \end{matrix}$



Knives Holder

Model: M9012

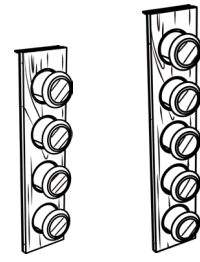
Size: $\begin{matrix} W & D & H \\ 100 & 90 & 225 \end{matrix}$



Magnetic Spice Rack (A)

Model: M9013

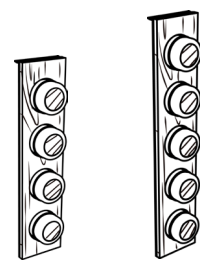
Size: $\begin{matrix} W & D & H \\ 4 \text{ spice jars} & 83 & 85 & 360 \\ 5 \text{ spice jars} & 83 & 85 & 460 \end{matrix}$



Magnetic Spice Rack (B)

Model: M9014

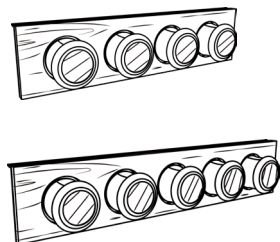
Size: $\begin{matrix} W & D & H \\ 4 \text{ spice jars} & 83 & 85 & 360 \\ 5 \text{ spice jars} & 83 & 85 & 460 \end{matrix}$



Magnetic Spice Rack (A)

Model: M9015

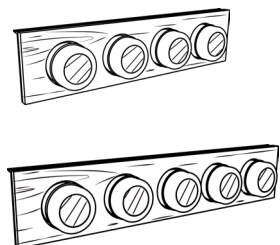
Size: 4 spice jars - W D H
360 x 85 x 83
5 spice jars - 460 x 85 x 83



Magnetic Spice Rack (B)

Model: M9016

Size: 4 spice jars - W D H
360 x 85 x 83
5 spice jars - 460 x 85 x 83



Silver

Hairline Black

Charcoal Black

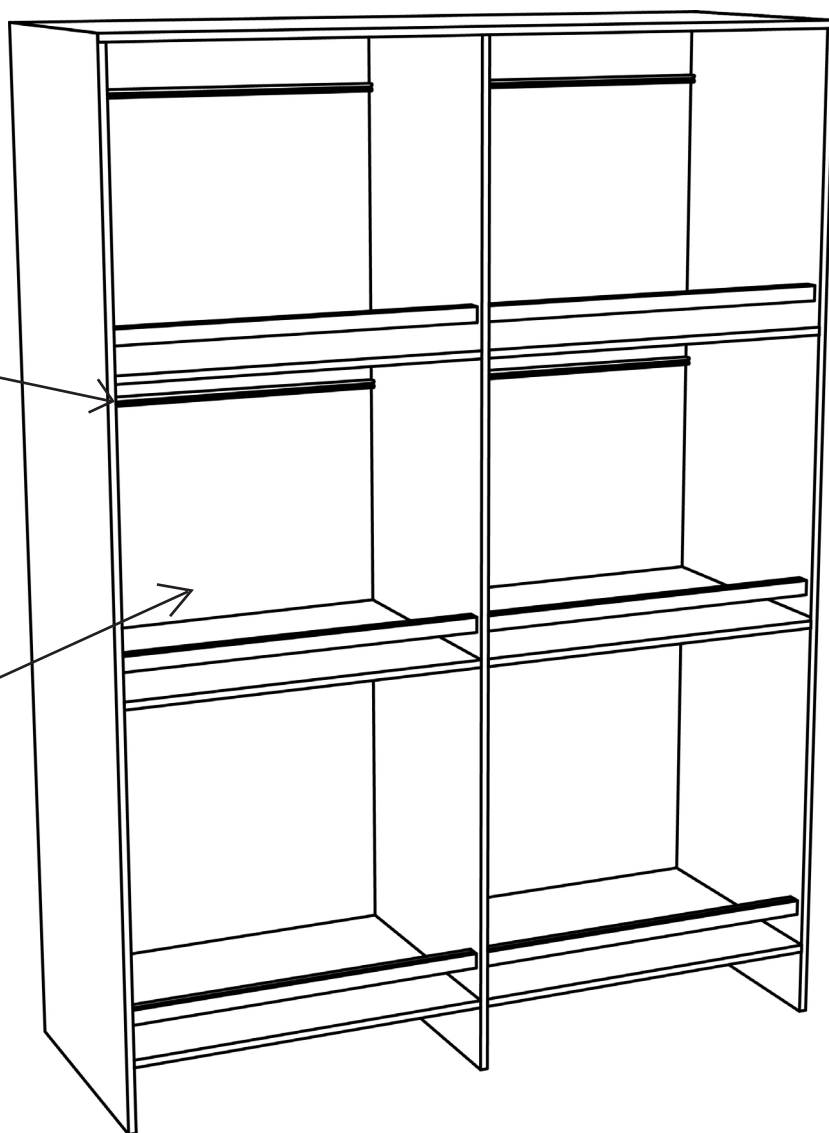
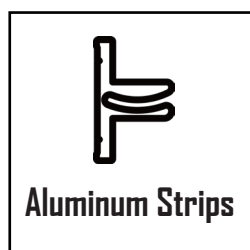
Warm Silver

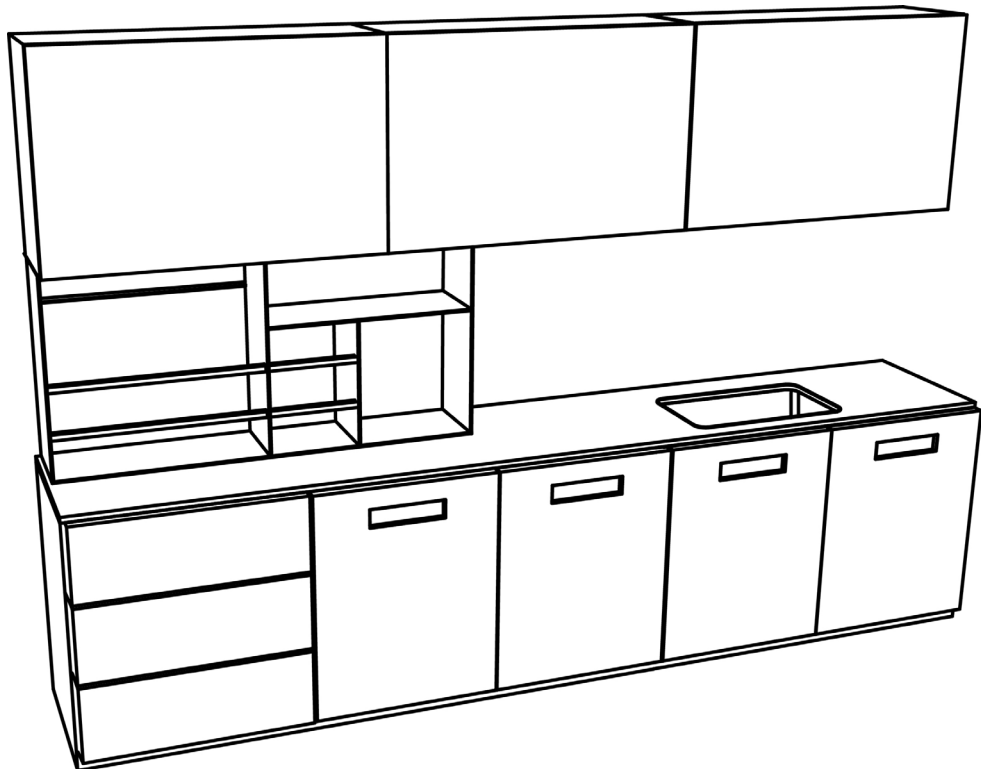
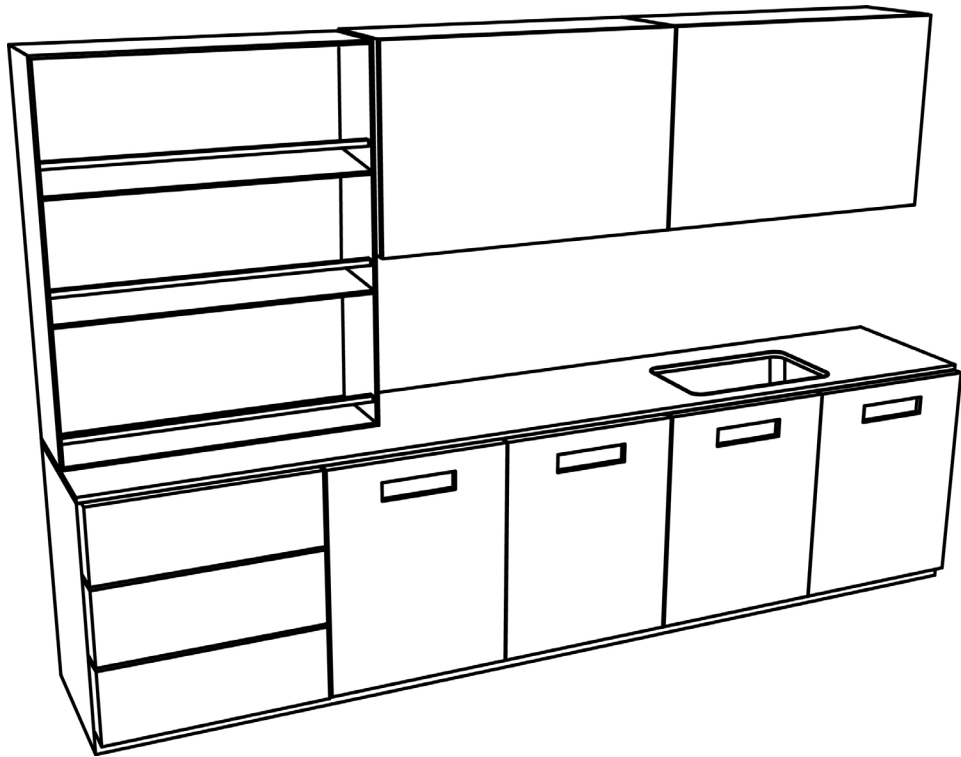
Champagne

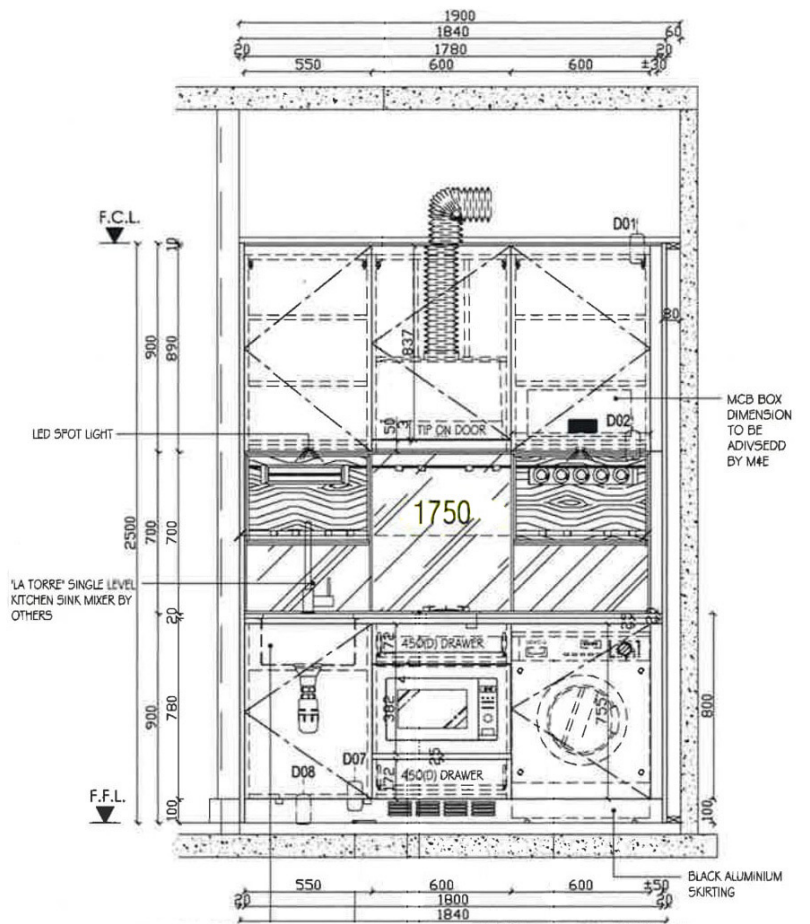
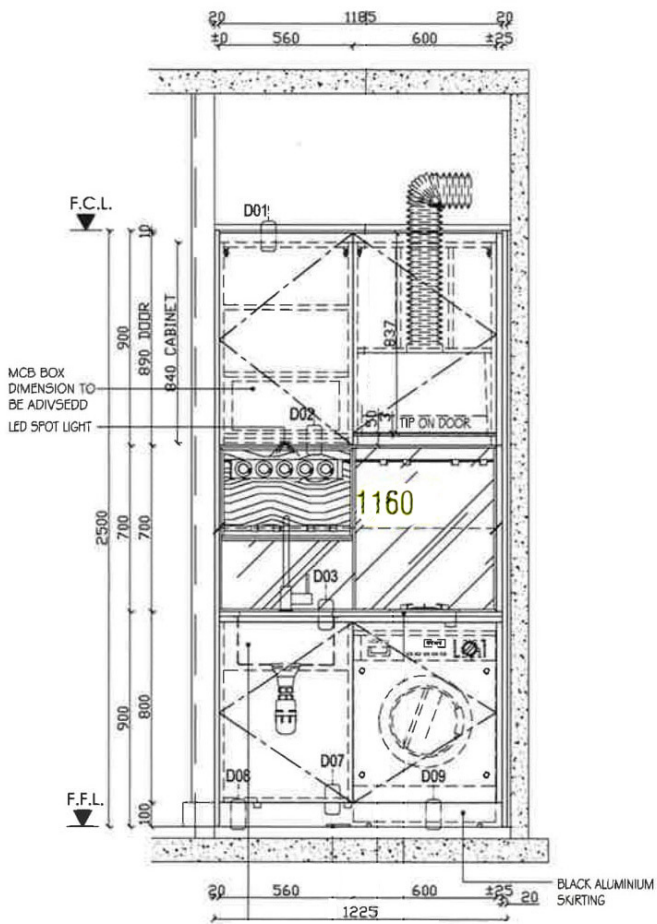
Dark Oak

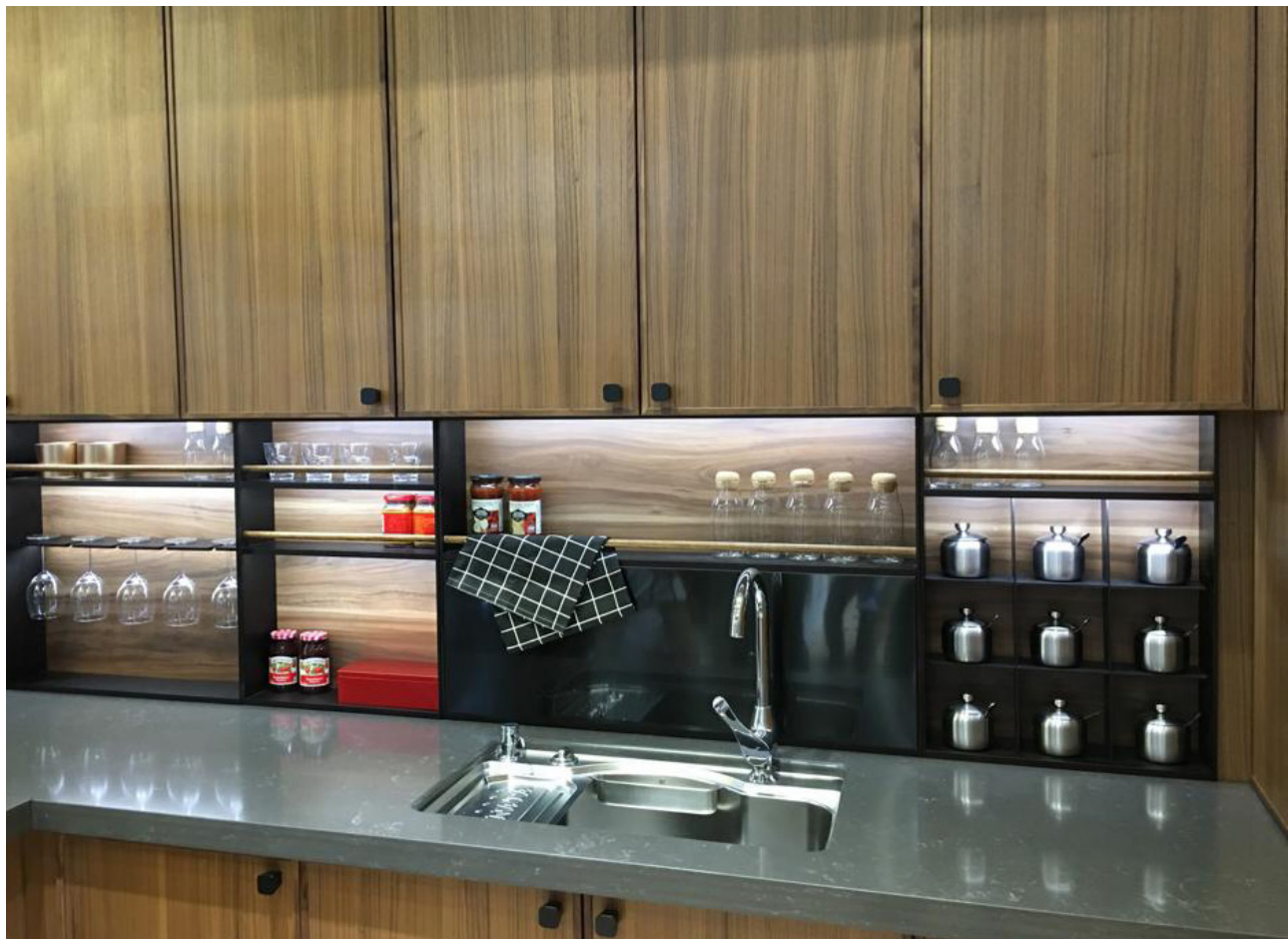
Walnut

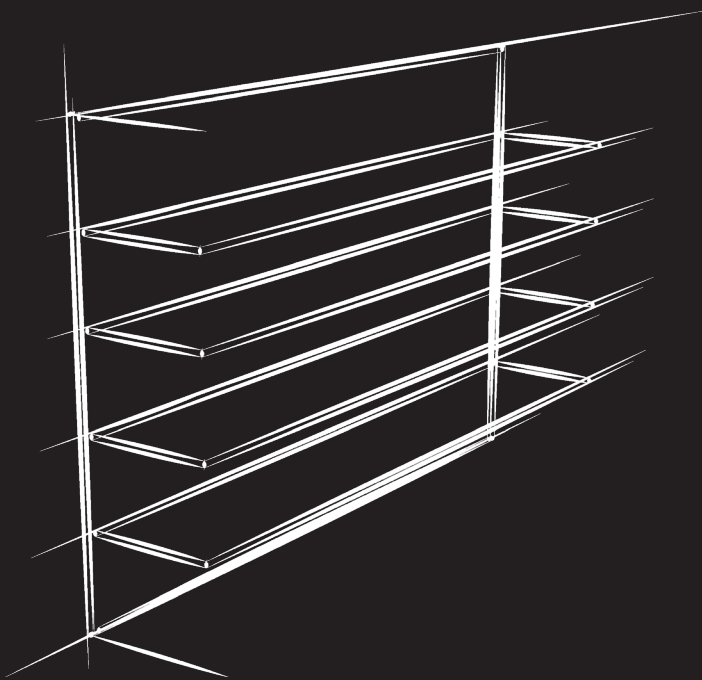
Backsplash System







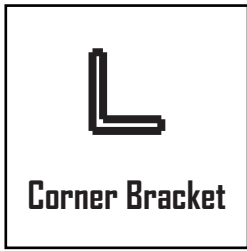




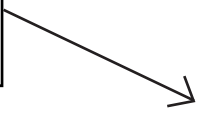
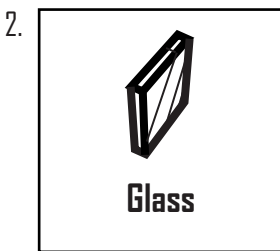
M9



Backsplash System



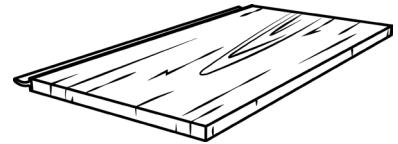
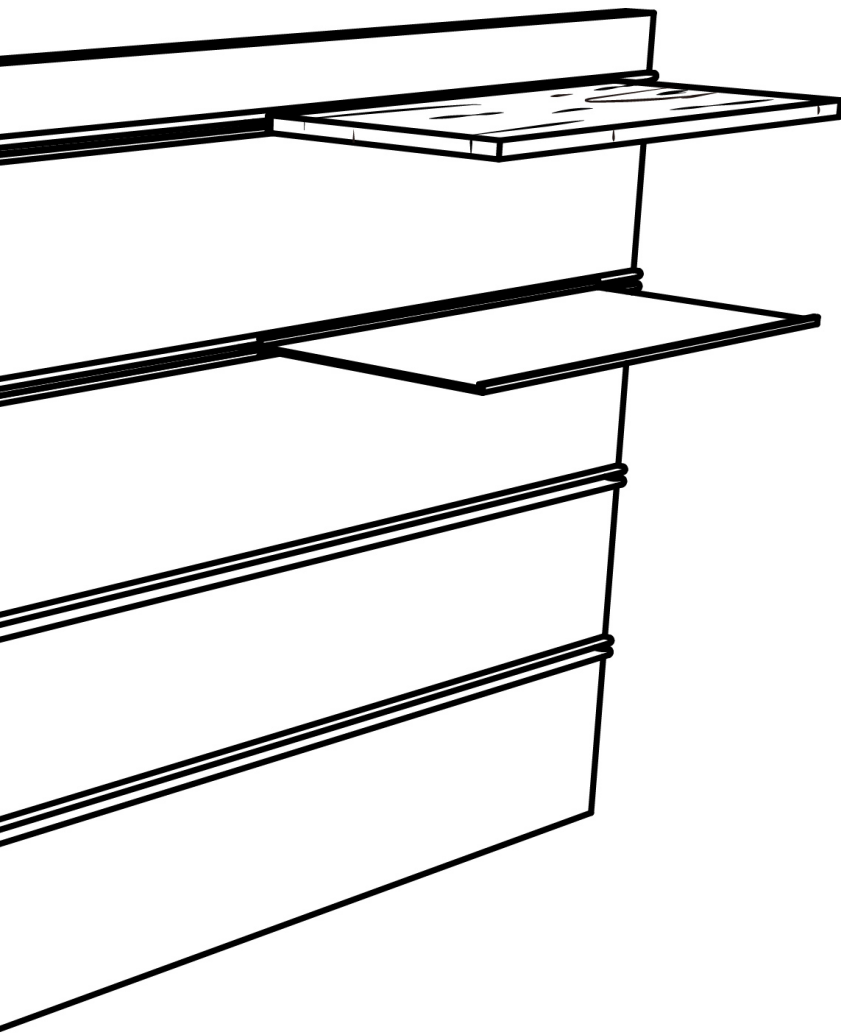
Or



1. **Wood Board**

2. **Glass**



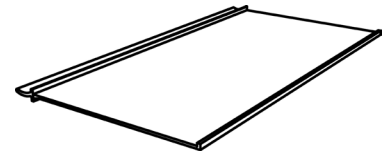


Wood Shelf

Model: M9011

Size:

W	D	H
450	300	25
600	300	25

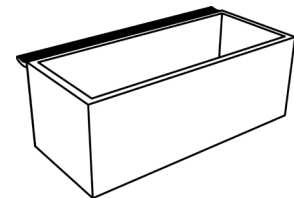


Aluminum Shelf

Model: M9010

Size:

W	D	H
300	150	5
450	150	5
600	150	5

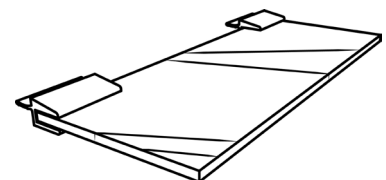


Storage Holder

Model: M9005

Size:

W	D	H
230	85	80
300	85	80

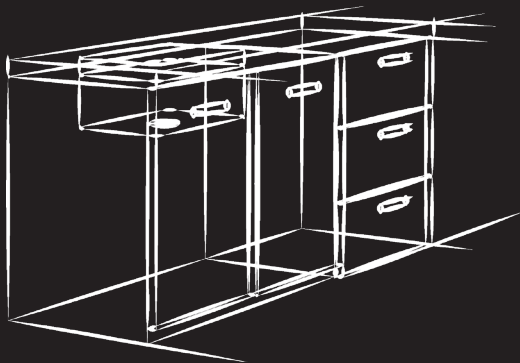
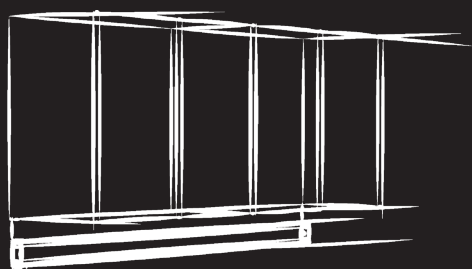


Glass Shelf

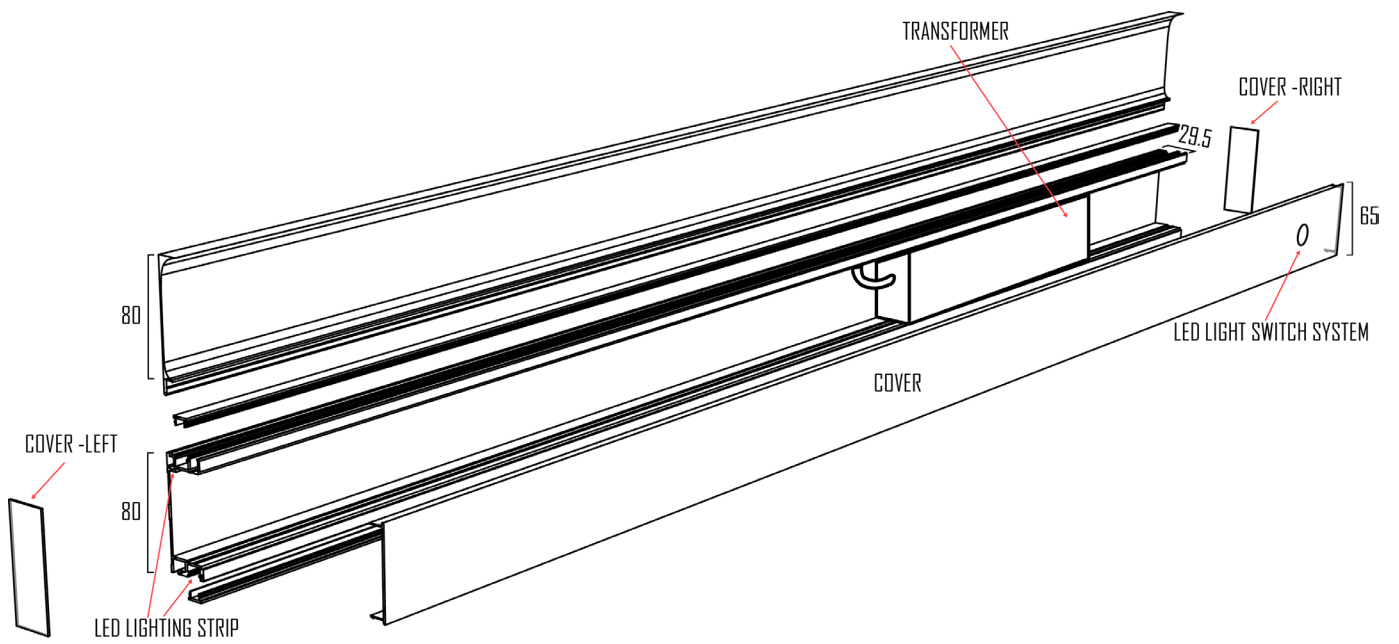
Model: M9001

Size:

W	D	H
300	120	6
350	120	6
400	120	6



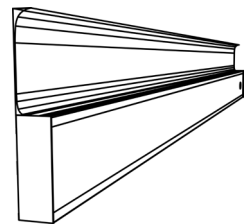
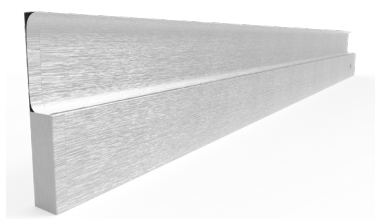
M8



Railing System

Model: M8001

Size: W D H
 1500 x 30 x 160
 1800 x 30 x 160
 2000 x 30 x 160



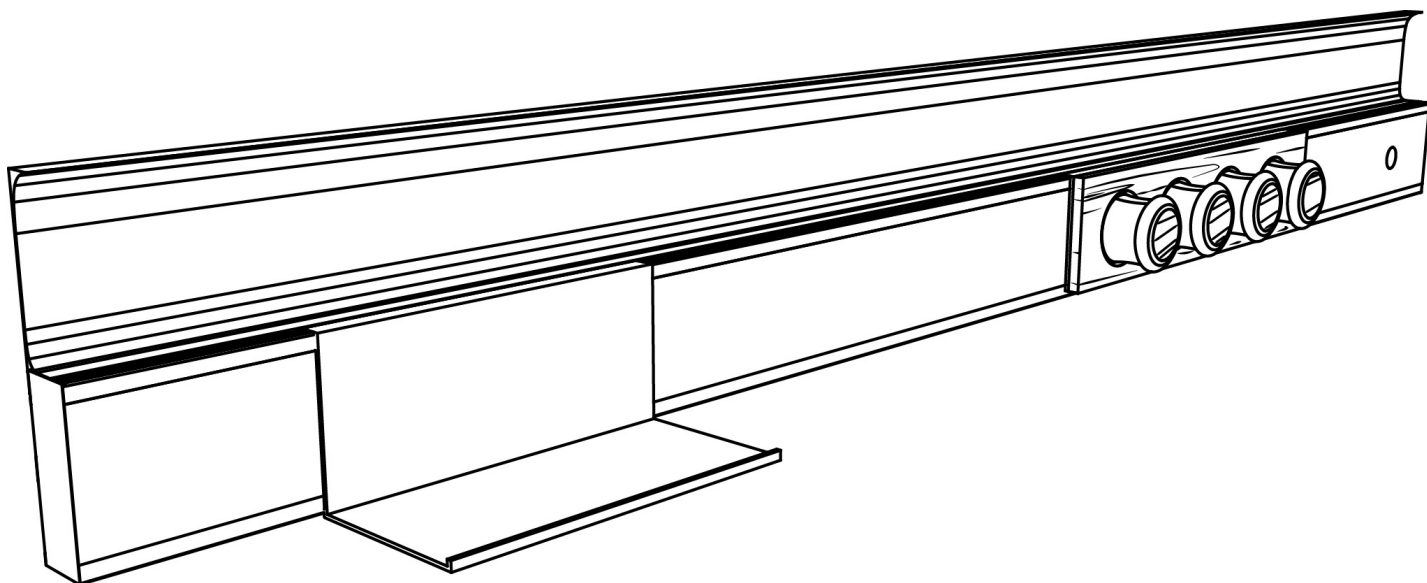
Silver

Hairline Black

Charcoal Black

Warm Silver

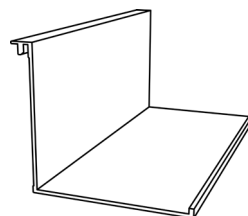
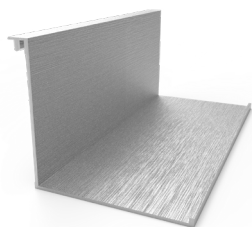
Champagne



Storage Holder

Model: M8002

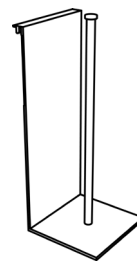
Size: $\begin{matrix} W & D & H \\ 200 & 130 & 140 \\ 300 & 130 & 140 \\ 350 & 130 & 140 \end{matrix}$



Paper Towel Holder

Model: M8003

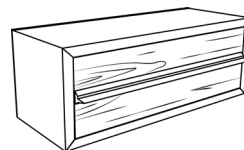
Size: $\begin{matrix} W & D & H \\ 100 & 115 & 225 \end{matrix}$



Storage Drawer (A)

Model: M8004

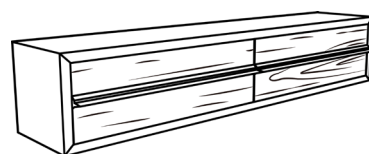
W D H
Size: 230 x 84 x 85



Storage Drawer (B)

Model: M8005

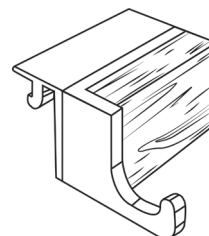
W D H
Size: 444 x 84 x 85



Mini Hook

Model: M8006

W D H
Size: 30 x 42 x 22



Knives Holder

Model: M8007

W D H
Size: 100 x 90 x 225



Silver

Hairline Black

Charcoal Black

Warm Silver

Champagne

Dark Oak

Walnut

Magnetic Spice Rack (A)

Model: M8008

Size: 4 spice jars - $W \quad D \quad H$
83 x 85 x 360
5 spice jars - 83 x 85 x 460



Magnetic Spice Rack (B)

Model: M8009

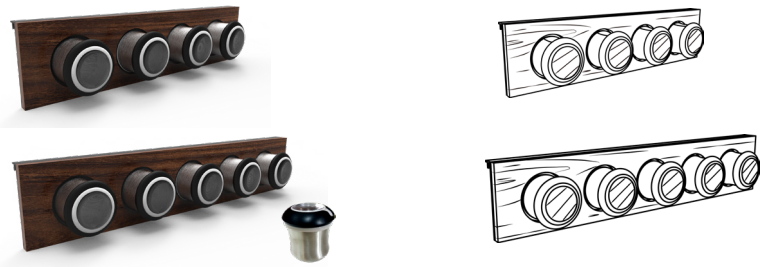
Size: 4 spice jars - $W \quad D \quad H$
83 x 85 x 360
5 spice jars - 83 x 85 x 460



Magnetic Spice Rack (A)

Model: M8010

Size: 4 spice jars - $W \quad D \quad H$
360 x 85 x 83
5 spice jars - 460 x 85 x 83



Magnetic Spice Rack (B)

Model: M8011

Size: 4 spice jars - $W \quad D \quad H$
360 x 85 x 83
5 spice jars - 460 x 85 x 83





Backsplash System



Silver

Hairline Black

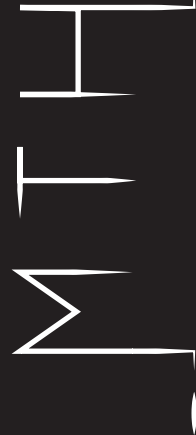
Charcoal Black

Warm Silver

Champagne

Dark Oak

Walnut



Ming Tat Hong Group Hardware Supplier Company Limited

Unit 5, 1/F, Kinglet Industrial Building, 21-23 Shing Wan Road, Tai Wai,
New Territories, Hong Kong.

Tel: (852) 2392 0602

Fax: (852) 2789 0752

Email: mth@hkstar.com

Facebook: www.facebook.com/MTH.Hardware/